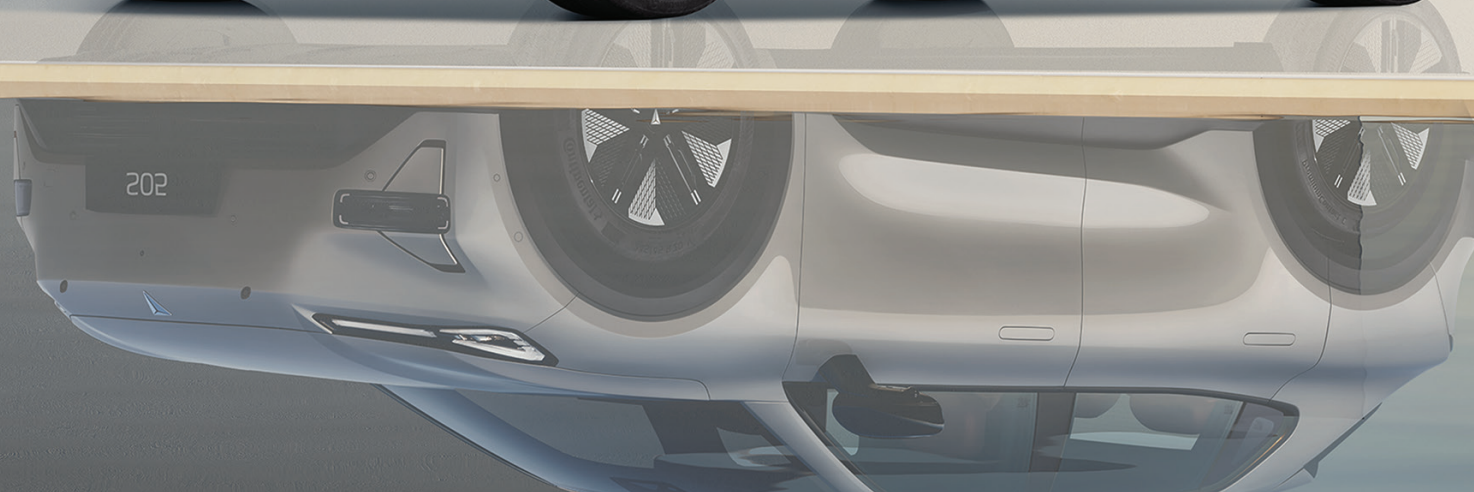




S05

Extend Your Freedom





LED Auto On-Off Headlights with DRL



Frameless Door



18" Two-Tone Alloy Wheel



Front Fog Light



LED Star Wing Through Taillights

A high-angle, interior shot of a car's cabin. The focus is on the panoramic glass roof, which is partially covered by a light blue electric sunshade. Below the roof, two orange leather seats with visible stitching are shown from the back. The car's interior trim is black. The text "Panoramic Glass Roof with Electric Sunshade" is overlaid on the left side of the image.

Panoramic Glass Roof
with Electric Sunshade



Front Passenger Leg Rest



Smart Balance Of Seating And Storage



Multifunction Steering Wheel



14 Speaker Sound System



Perforated Synthetic Leather Seats



An Intelligent Cockpit Blending Space, Technology, And Sophistication



15.4" Touchscreen Sunflower Display



Rear AC Vent

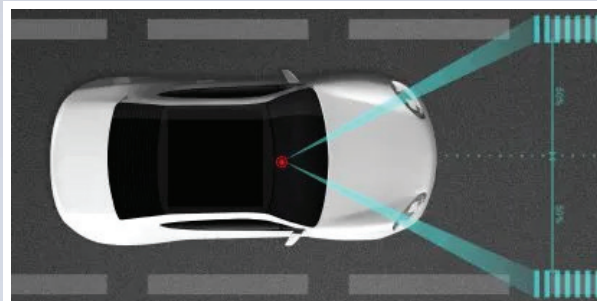


50W Wireless Charger



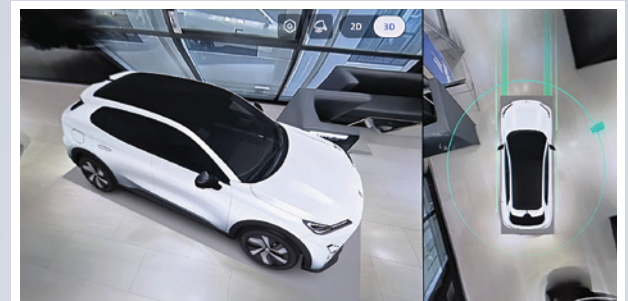
Remote Straight in & Out (RSIO)

Lane Centering Control (LCC)
Lateral Deviation Control (LDC)
Lane Departure Warning (LDW)
High Beam Assist (HMA)



Lane Keep Assist

Driver Fatigue Monitoring System
Traction Control System (TCS)
Electronic Stability Program (ESP)
Parking Sensor



540° Surround View Camera

Blind Spot Detection
Around View Drive Video Recorder
Rollover Mitigation System (ROM)
Sentry Mode

1234km

Full Charge + Full Tank



BATTERY AND CHARGING NETWORK

Battery Capacity

27.28

kWh

Ternary Lithium Battery (NMC)



7kW

Charger & Installation Free
with Each Car



15

Minutes

Charging time
(30%-80%)

DC



AC

2

Hours

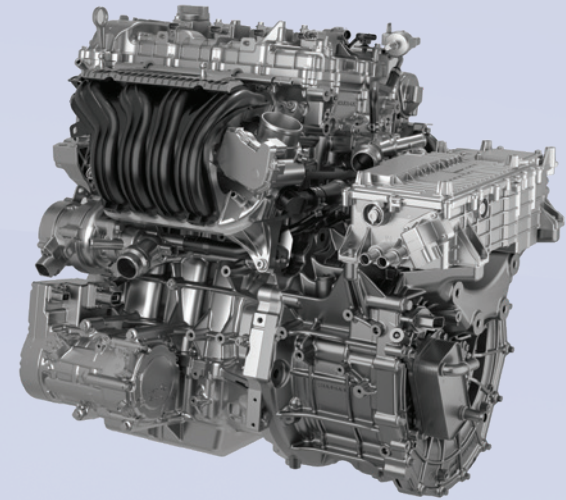


DEEPAL | Mercedes-Benz | RANCON

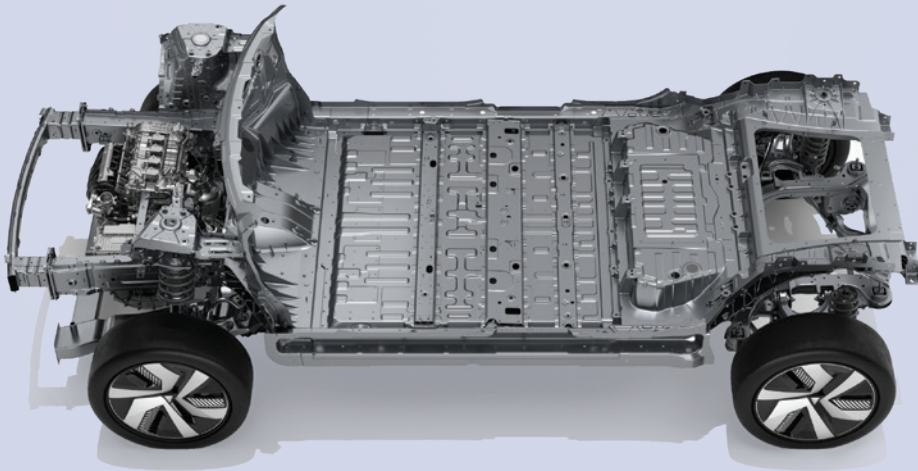
From Deepal Charging Stations to Mercedes and
Rancon Networks You're Always Covered.



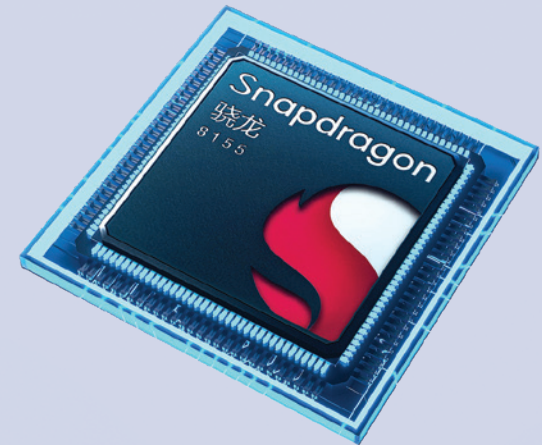
Equipped with a 27.28 kWh CATL LFP battery using Golden Shield 2.0 technology, the S05 ensures long life, high safety, and fast charging, with liquid cooling and low-temperature heating for optimal performance.



S05 uses a 1.5-liter, naturally aspirated, four-cylinder gasoline engine as a generator to power the electric motor and charge the battery



The Deepal S05, built on Changan's EPA1 platform with unibody construction and multi-link rear suspension, achieves near 50:50 weight distribution and rear-wheel drive for balanced, agile handling.



Powered by the Snapdragon SA8155P high-performance chip, the Deepal S05 delivers a fast and responsive cockpit experience

SPECIFICATIONS

DIMENSION	
Length x Width x Height (mm)	4,620mm x 1,900mm x 1,600mm
Wheelbase (mm)	2,880 mm
Wheel Track Front / Rear (mm)	1,625 mm / 1,640 mm
Ground Clearance (mm)	174 mm
Wheel	Alloy 18 inches
Tire Size	225/60 R18
Seating Capacity	5
PERFORMANCE	
Motor Type	Permanent Magnet Synchronous Motor
Maximum Power (kW) / (PS)	160 kW / 218 PS
Maximum Torque (Nm)	320 N-m
Electric driving range : NEDC	158 km
Drivetrain	Rear wheel drive (RWD)
Battery Type	Lithium Iron Phosphate (LFP)
Battery Capacity	27.28 kWh
0-100 KM/H ACCELERATION TIME	7.9 s
TOP SPEED	175 (KM/H)
ENGINE TYPE	Range-extender Engine with 4 Cylinder 16 Valve VVT
Displacement	1,497 cc
Engine Power (kW) / (PS)	70 kW / 95 PS
Engine Torque	122 Nm
Fuel Tank Capacity	44.9 L
Charging Information	
Maximum AC Charging Power (kW)	7
Maximum DC Charging Power (kW)	54.5
DC charging time 30-80% (minute)	20
Vehicle to Load (V2L)	•
Regenerative Braking System	•
Chassis System	
Steering Wheel	Electric Power Steering (EPS)
Minimum Turning Radius (m)	5.75
Front Suspension System	McPherson Strut
Rear Suspension System	Multi-link Independent
Front Braking System	Ventilated Disc
Rear Braking System	Disc
Exterior	
LED Daytime Running Lights	•
LED Auto On-Off Headlights	•
Height Adjustable Headlights	•
LED Star Wing Through Taillights	•
Rear Fog Lights	•
Panoramic Glass Roof with Electric Sunshade	•
Power Tailgate with Anti-pinch Function	•

Frameless Door Windows	•
Auto Front Windshield Defogging System	•
Electric Hidden Door Handles	•
Electric Adjustable and Foldable Side Door Mirrors	•
Heated Side Door Mirrors System	•
Auto Folding Side Door Mirrors when Lock	•
Side Door Mirrors Memory Function	•
Auto Tilt Side Door Mirrors when Reversing	•
Rain Sensor	•
Rear Boneless Wiper	•
Rear Spoiler with High Mount Brake Light	•
Interior	
Multi-function Steering Wheel with Shortcut Button	•
Tilt and Telescopic Steering Wheel	•
Auto Dimming Rearview Mirror	•
One-touch 4 Door Windows Up-down with Anti-pinch Function	•
Perforated Synthetic Leather Seats	•
6-way Power Adjustment Driver Seat	•
2-way Power Adjustment Lumbar Support Driver Seat	•
4-way Power Adjustment Front Passenger Seat	•
2-way Power Adjustment Front Passenger Leg Rest	•
Driver and Front Passenger Seat Position Memory with Easy Entry & Exit	•
Ventilated and Heated Driver and Front Passenger Seat	•
60:40 Foldable Rear Seat	•
Front Sun Visors with Mirror and Light	•
LED Reading Lights	•
64 Colors Ambient Light	•
No. of USB	USB-A: 2 Positions / USB-C: 1 Position
12V Power Supply	•
Air Conditioning System	
Auto A/C	•
Rear A/C Outlet	•
PM2.5 Filter	•
Intelligent Cabin	
Head-up Display with AR Navigation	•
Drive Mode Selection (Eco, Comfort,Sport, Customize)	•
15.4 Inches Touchscreen	Sunflower
Navigation System	Online
Online Entertainment Application	•
Scenario Modes Selection System	•
No. of Speakers	14
Outside Speakers (Customizable Sound)	•
Intelligent Voice Control (Thai & English)	4 Zones

50W Wireless Charger	•
Smart Phone Connection	•
Wireless Apple Carplay & Android Auto	•
Smart Key	•
Mobile Application Remote Control	•
Over The Air (OTA)	•
Intelligent Driving Assistance System	
Remote Straight In and Out (RSIO)	•
Integrated Adaptive Cruise Control (IACC)	•
Traffic Jam Assist (TJA)	•
Lane Centering Control (LCC)	•
Lateral Deviation Control (LDC)	•
Forward Collision Warning (FCW)	•
Automatic Emergency Braking (AEB)	•
Lane Departure Warning (LDW)	•
Lane Keeping Assist (LKA)	•
Emergency Lane Keeping (ELK)	•
Rear Collision Warning (RCW)	•
Blind Spot Detection (BSD)	•
Rear Cross Traffic Alert (RCTA)	•
Rear Cross Traffic Braking (RCTB)	•
Lane Change Assist (LCA)	•
Safe Exit Warning (SEW)	•
Overspeed Warning (OSW)	•
Traffic Sign Recognition (TSR)	•
High Beam Assist (HMA)	•
Safe Distance Warning (SDW)	•
Safety	
Front Airbags	•
Front Side Airbags	•
Side Curtain Airbags	•
3D Around View Camera with Transparent Chassis	•
Around View Drive Video Recorder (DVR)	•
Sentry Mode	•
Driver Fatigue Monitoring System (DMS)	•
Anti-lock Braking System (ABS)	•
Electronic Brakeforce Distribution (EBD)	•
Brake Assist (BA)	•
Electronic Stability Program (ESP)	•
Traction Control System (TCS)	•
Hill Hold Control (HHC)	•
Hill Descent Control (HDC)	•
Rollover Mitigation System (ROM)	•
Acoustic Vehicle Alerting System (AVAS)	•
Front Height Adjustable Seat Belts	•
Front and Rear Seat Belt Reminder	•

Front Pre-tensioner and Force-limiter Seat Belts	•
Child Safety Lock (Electronic)	•
Electric Parking Brake with Auto Hold Function	•
Parking Sensor	Front 2 / Rear 4
Anti-theft Alarm System	•
ISOFIX and Child Anchor	•
Tire Pressure Monitoring System (TPMS)	•
Tire Repair Kit	•

Exterior Color



Mercury Silver



Andromeda Blue



Deep Space Black



Ganymede Grey



Moonlight White

Interior Color



ORANGE LEATHER INTERIOR



BLACK LEATHER INTERIOR

DHS AUTOS



Rangs Babylonia, 246 Tejgaon I/A, Dhaka 1208, Bangladesh



www.deepal.com.bd



info@deepal.com.bd



09 678 000 333



[deepalbd](https://www.facebook.com/deepalbd)



[deepal.bd](https://www.instagram.com/deepal.bd)